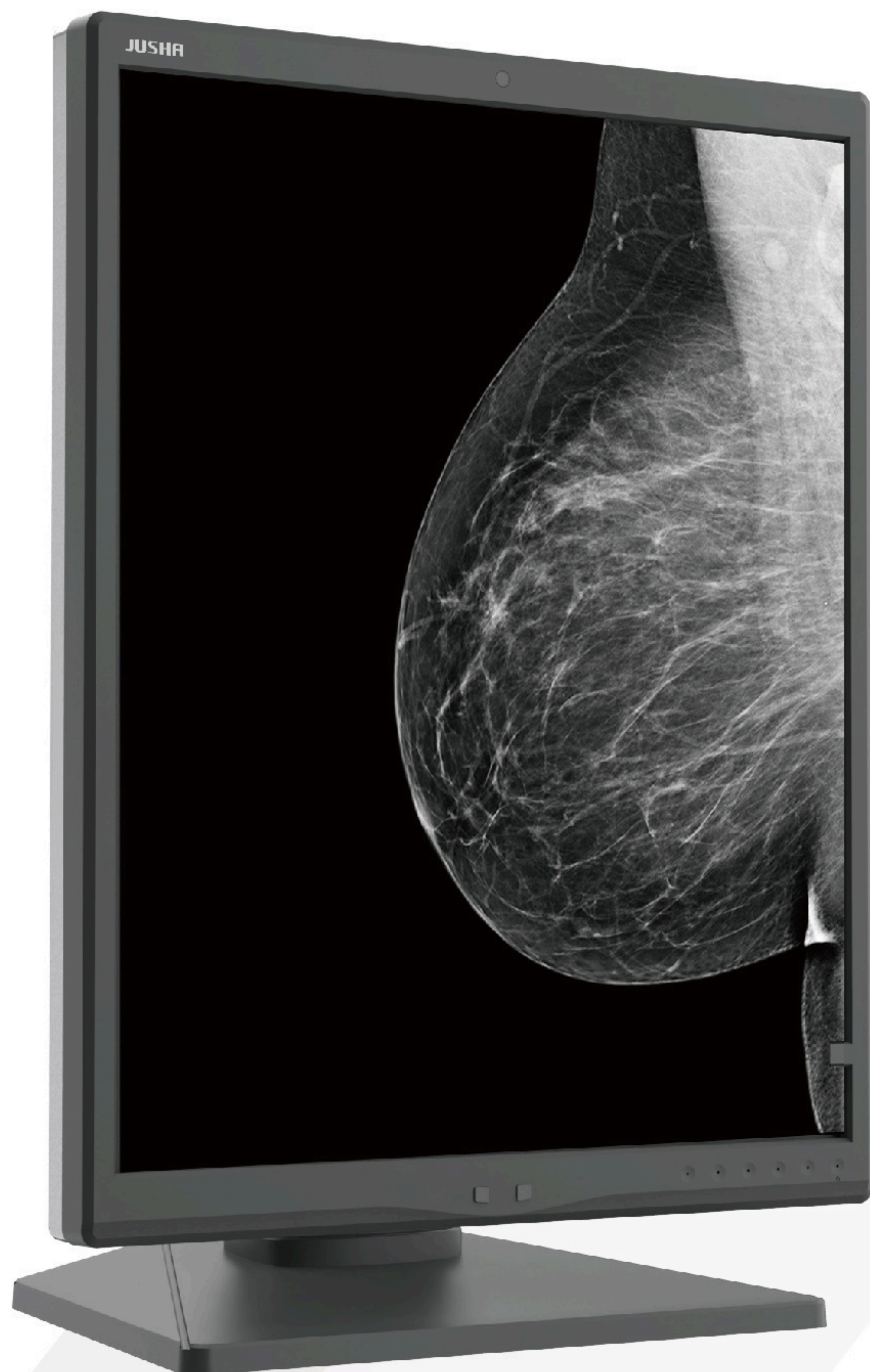




M550G

5MP/Monochrome/Diagnostic



JUSHA 5M Medical Grayscale Breast Diagnosis Display

DICOM	Uniformity	QA	Human Detection
High Brightness	16-bit LUT	Ultra-thin Bezel	Multi-stance Stand
Daisy Chain	Ambient Light	Lightbox	Spotlight
10-bit	Energy Efficient		

5MP medical-grade monochrome monitor. With Full Screen Uniformity calibration, 16-bit LUT, 10-bit color depth ensures DICOM standard all the time. Build-in sensor and Jusha QA software guarantees great image quality. 5MP resolution supports mammography, DR, CT, and much more.



Call Us
+41 91 8409660

Product Features

1. DICOM Calibration

Complying with DICOM 3.14 standard and equipped with dynamic LUT, the monitor is ensured to meet the DICOM error requirements at any brightness, contrast, and color temperature, improves the accuracy and stability of lesion diagnosis.

2. Full Screen Uniformity

Through the pixel-by-pixel full-screen brightness uniformity calibration, the difference in brightness and color temperature of different screen areas caused by the characteristics of the liquid crystal panel can be effectively reduced. Ensure that any area of the entire screen conforms to the DICOM standard, which can significantly reduce missed and misjudged diagnosis.

3. Jusha QA Compatible

Users can check and calibrate the monitor status by themselves, removing the side effects from panel's aging, which prolongs the lifespan of the monitor and achieving more accurate image.

4. Human Detection

Human detection feature will turn off the monitor when no person is presented. This prolongs the monitor's life cycle, and helps save energy.

5. High Brightness

Brightness is one of the most important performance indicators of medical displays. High brightness can achieve a larger dynamic range and more gray-scale details, which can help locate the lesion and improve the accuracy of diagnosis.

6. 16-bit LUT

The 16-bit lookup table further reduces the DICOM error, and the distinction between two adjacent gray scales is more obvious, which is conducive to the diagnosis of the early lesion tissue with the smallest gray scale difference from the normal tissue.

7. Ultra-thin Bezel

To best use two single-head monitors, the ultra-thin bezel achieves the largest effective display area in the field of view, providing a seamless viewing experience.

8. Multi-stance Stand

You can easily change the angle and height of the monitor with our stand, minimizing the fatigue during everyday viewing.

9. Daisy Chain

This technology connect a series of monitors to a single video output port on a computer or docking station, without tedious wiring work, and can reduce desktop clutter and cable management.

10. Ambient Light Adaptive

The monitor measures the ambient light in real time, and adjusts the display accordingly to ensure accurate diagnosis.

11. Lightbox Mode

The Lightbox Mode can increase the brightness of the monitor to peak value, which can replace the traditional Lightbox for film reading and increase work efficiency.

Specification

Model No.	M550G
Size	21.3"
Type	Monochrome IPS
Resolution	5MP 2560×2048/2048×2560
Aspect Ratio	5:4
Pixel Pitch	0.165×0.165mm
Max Brightness (Panel)	3000cd/m ²
Max Brightness (DICOM Calibrated)	1000cd/m ²
Contrast Ratio	2000: 1
Response Time (Ton+Toff)/2	12.5 ms
Color Depth	10bit
LUT Depth	16bit
Viewing Angle	≥178° (CR≥10)
Sensors	Backlight Front Presence Ambient Light Temperature Sensor
Input Interface	DVI-D×1(8bit): 2560*2048@50Hz DP×1(10bit): 2560*2048@50Hz
Output Interface	DP*1 (Daisy Chain)
Life Cycle	50000h
Qualitas QA Software	✓
Power Requirements	100-240V AC 50-60Hz 24VDC-3.75A
Typical Power Consumption	35W
Max Power Consumption	80W
Dimensions (with stand)	368mm*521mm*238mm
Net Weight (with stand)	12kg

12. Spotlight Mode

Spotlight feature helps doctor to focus on certain area, better analyze tiny details.

13. 10-bit Color Depth

This makes color transition smoother, minimized the error in adjacent color. The whole image looks more delicate.

14. Energy Efficient

With minimum power consumption of 0.5W, the monitor is eco-friendly and energy-saving, the LED backlight lifespan is also longer.

