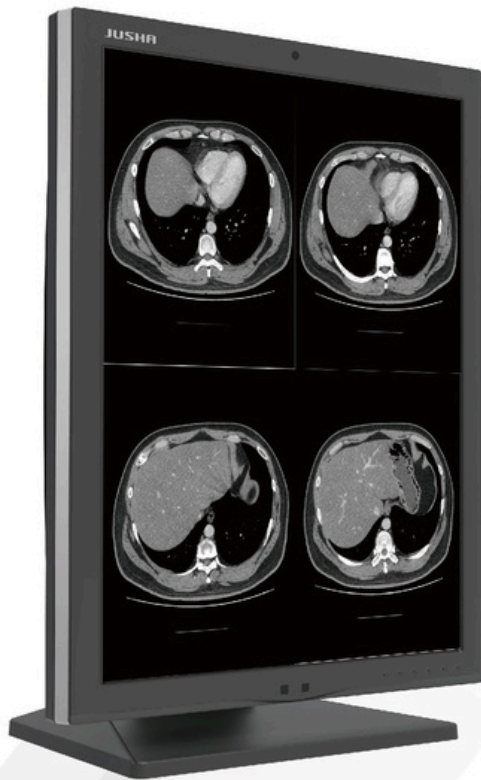




M270G

2MP/Monochrome/Diagnostic



Jusha 2MP Monochrome Medical Diagnostic Display

| | | | |
|-----------------|------------|------------|--------------------|
| DICOM | Uniformity | QA | Front Sensor |
| Human Detection | 14-bit LUT | Shark Gill | Multi-stance Stand |
| Ambient Light | SmarTouch | Lightbox | Energy Efficient |

2MP Medical-grade Monochrome monitor. With 14-bit LUT, Full Screen Uniformity, build-in sensor and QA software, the monitor is quality guaranteed all the time.



Call Us
+41 91 8409660

Product Features

1. 14-bit LUT

The 14-bit lookup table further reduces the DICOM error, and the distinction between two adjacent gray scales is more obvious, which is conducive to the diagnosis of the early lesion tissue with the smallest gray scale difference from the normal tissue.

2. DICOM Calibration

Complying with DICOM 3.14 standard and equipped with dynamic LUT, the monitor is ensured to meet the DICOM error requirements of any brightness, contrast, and color temperature, improves the accuracy and stability of lesion diagnosis.

3. Full Screen Uniformity

Through the pixel-by-pixel full-screen brightness uniformity calibration, the difference in brightness and color temperature of different screen areas caused by the characteristics of the liquid crystal panel can be effectively reduced. Ensure that any area of the entire screen conforms to the DICOM standard, which can significantly reduce missed and misjudged diagnosis.

4. Lightbox Mode

The Lightbox Mode can increase the brightness of the monitor to peak value, which can replace the traditional Lightbox for film reading and increase work efficiency.

5. SmarTouch

Medical image diagnosis usually requires high brightness, and long-term use of high-brightness displays will damage your eyesight. In order to solve this problem, we provide a one-key brightening function. You can use a simple shortcut key to switch the display brightness between normal and maximum, providing great convenience for your work.

6. Integrated Front Sensor

The user can customize the black point brightness, white point brightness and environmental brightness of the DICOM curve according to the actual environment and diagnosis requirements. Build-in sensors measure the current display brightness in real time, enabling the monitor automatically adjusted to the best status, and complying with DICOM standard any time.

7. Jusha QA Compatible

Users can check and calibrate the monitor status by themselves, removing the side effects from panel's aging, which prolongs the lifespan of the monitor and achieving more accurate image.

8. Shark Gill Design

Award winning Shark Gill outlook design fuse the shark elements into product, achieving a modern and polished look.

9. Multi-stance Stand

You can easily change the angle and height of the monitor with our stand, minimizing the fatigue during everyday viewing.

10. Ambient Light Adaptive

The monitor measures the ambient light in real time, and adjusts the display accordingly to ensure accurate diagnosis.

11. Human Detection

Human detection feature will turn off the monitor when no person is presented. This prolongs the monitor's life cycle, and helps save energy.

12. Energy Efficient

With minimum power consumption of 0.5W, the monitor is eco-friendly and energy-saving, the LED backlight lifespan is also longer.

Specification

| Model No. | M270G |
|-------------------------------------|--|
| Backlight | LED |
| Size | 21.3" |
| Type (Color/Monochrome) | Monochrome |
| Active Display | 432(H)×324(V)mm |
| Resolution | 1600×1200 1200×1600 |
| Pixel Pitch | 0.270×0.270mm |
| Response Time | 19ms(10ms+9ms) |
| Brightness(typical) | 1900cd/m ² |
| DICOM calibrated luminance(typical) | 1000cd/m ² (max) |
| Contrast Ratio(panel typical) | 1800:1 |
| Color Depth | 10 bit |
| LUT depth | 14 bit |
| View angle | ≥178° (CR≥10) |
| Sensor | Backlight Sensor Front Sensor Human Inductive Sensor Ambient Light Sensor Temperature Sensor |
| LUT | DICOM GAMMA2.2 GAMMA2.4 DSA DSI CT/MRI |
| Video Signals | DVI-D×1 DP×1 |
| Power Requirements | 12V DC-5A |
| Cabinet color | Cold Grey |
| Dimensions | 382mm×528mm×238mm |
| Dimensions (Without Stand) | 382mm×490mm×77mm |
| Net Weight | 10.5kg |
| Net Weight (Without Stand) | 6.5kg |