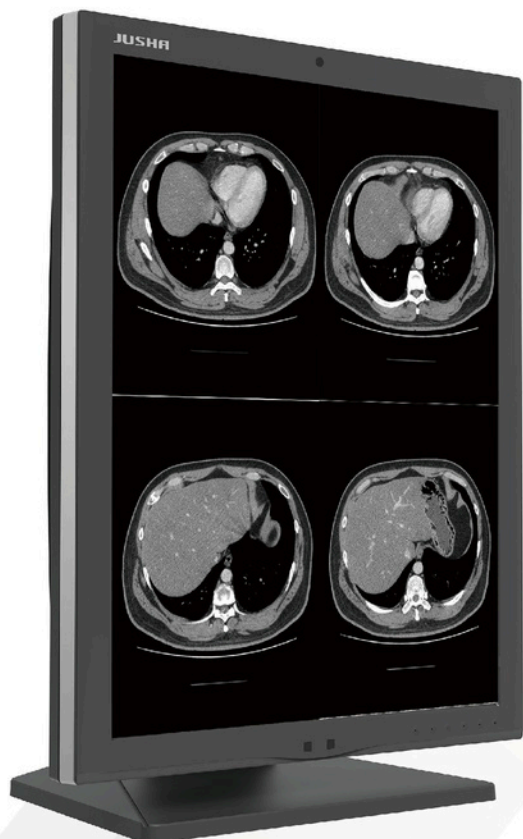




# M260G

2MP/Monochrome/Diagnostic



## Jusha 2MP Medical Grayscale Diagnostic Display

DICOM	Uniformity	Front Sensor	14-bit LUT
Shark Gill	Multi-stance Stand	SmarTouch	Lightbox

2MP Medical-grade monochrome monitor. with industry-leading LED, 14-bit LUT, full-screen uniformity to ensure DICOM standard all time. With build-in sensor, it works with Jusha QA software seamlessly. Various shortcut feature to maximize your productivity.



Call Us  
**+41 91 8409660**

# Product Features

## 1. 14-bit LUT

The 14-bit lookup table further reduces the DICOM error, and the distinction between two adjacent gray scales is more obvious, which is conducive to the diagnosis of the early lesion tissue with the smallest gray scale difference from the normal tissue.

## 2. DICOM Calibration

Complying with DICOM 3.14 standard and equipped with dynamic LUT, the monitor is ensured to meet the DICOM error requirements at any brightness, contrast, and color temperature, improves the accuracy and stability of lesion diagnosis.

## 3. Full Screen Uniformity

Through the pixel-by-pixel full-screen brightness uniformity calibration, the difference in brightness and color temperature of different screen areas caused by the characteristics of the liquid crystal panel can be effectively reduced. Ensure that any area of the entire screen conforms to the DICOM standard, which can significantly reduce missed and misjudged diagnosis.

## 4. Lightbox Mode

The Lightbox Mode can increase the brightness of the monitor to peak value, which can replace the traditional Lightbox for film reading and increase work efficiency.

## 5. SmartTouch

Medical image diagnosis usually requires high brightness, and long-term use of high-brightness displays will damage your eyesight. In order to solve this problem, we provide a one-key brightening function. You can use a simple shortcut key to switch the display brightness between normal and maximum, providing great convenience for your work.

## 6. Integrated Front Sensor

The user can customize the black point brightness, white point brightness and environmental brightness of the DICOM curve according to the actual environment and diagnosis requirements. Build-in sensors measure the current display brightness in real time, enabling the monitor automatically adjusted to the best status, and complying with DICOM standard any time.

## 7. Jusha QA Compatible

Users can check and calibrate the monitor status by themselves, removing the side effects from panel's aging, which prolongs the lifespan of the monitor and achieving more accurate image.

## 8. Shark Gill Design

Award winning Shark Gill outlook design fuse the shark elements into product, achieving a modern and polished look.

## 9. Multi-stance Stand

You can easily change the angle and height of the monitor with our stand, minimizing the fatigue during everyday viewing.

# Specification

Model No.	M260G
Backlight	LED
Size	21.3"
Type (Color/Monochrome)	Monochrome
Active Display	432(H)×324(V)mm
Resolution	1600×1200/1200×1600
Pixel Pitch	0.270×0.270mm
Response Time	16ms(8ms+8ms)
Brightness(typical)	1000cd/m <sup>2</sup>
DICOM calibrated luminance(typical)	400cd/m <sup>2</sup> (default) 800cd/m <sup>2</sup> (max)
Contrast Ratio(panel typical)	1400:1
LUT	14bit
View angle	≥178° (CR≥10)
Sensor	Backlight Sensor Front Sensor Temperature Sensor
LUT	DICOM GAMMA2.2 GAMMA2.4 DSA DSI CT/MRI
Video Signals	DVI-D×1 DP×1
Power Requirements	12V DC-4A
Cabinet color	Cold Grey
Dimensions	382mm×635mm×238mm
Dimensions(Without Stand)	382mm×490mm×77mm
Net Weight	11kg
Net Weight(Without Stand)	7.5kg